



ENGINEERS EUROPE

**THE ENGINEERS EUROPE CERTIFICATION COMMITTEE (The CC)
TERMS OF REFERENCE**

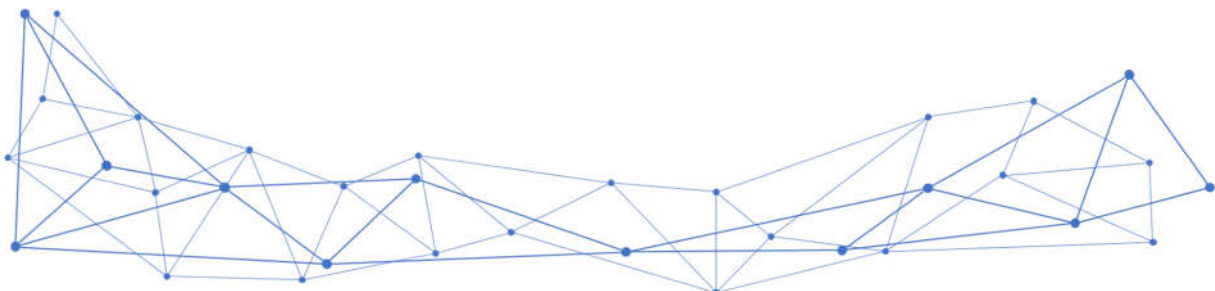
Adopted by the General Assembly 07/10/2022

I. Scope and Objectives :

1. The ENGINEERS EUROPE By-Laws, in Article B9, establish a certain number of rules to be followed by the ENGINEERS EUROPE Committees.
2. The CC (*previously known as the European Monitoring Committee – EMC*) shall consist of a committee of experts, nominated by the National Members of ENGINEERS EUROPE. Since January 2012 the CC incorporated the scope and objectives of the former CPDC (Continuing Professional Development Committee), the CC therefore also addresses CPD issues.
3. The CC will monitor the composition and working methods of National Monitoring Committees (NMC).
4. The CC will approve new programs in schools listed in the ENGINEERS EUROPE European Engineering Education Database (EEED, former INDEX). Any update of the EEED must be proposed by one NMC, recommended or approved by the CC or the Executive Board and implemented by the Central Secretariat.
5. The CC will decide on all applications for the EUR ING title.
6. The CC will advise the Executive Board on all procedures required to maintain and update the standards for registration and award of the EUR ING Certificate, as laid down in the Tutorial for the EUR ING.

II. Membership :

7. Membership of the CC shall reflect the spectrum of engineering employment, as well as the variety of geographical regions, cultural background and engineering formation systems in ENGINEERS EUROPE. The composition of the CC therefore ideally consists of five experts per ENGINEERS EUROPE Regional Group. The allocation of countries per Regional Group is as follows:
 - Group North : DK, EE, IE, IS, NO, RU, SE, UK
 - Group Centre : AT, BE, CH, CZ, DE, HR, HU, NL, PL, SI, SK, UA
 - Group South: BG, CY, ES, FR, GR, IT, KZ, MK, MT, PT, RS, RO, TR



8. There is no specific allocation of tasks to individual members within the CC. The CC members shall be engineers with expertise in the European professional formation systems, including both the engineering education and professional experience. CC Members must be fluent in English, which is the working language of the Committee.
9. The members of the CC are proposed by the National Members and appointed by the Executive Board, after recommendation of the CC. They work in an independent capacity.
10. The CC may invite observers or experts for very special and well defined purposes.
11. The Chair of the CC is appointed by the Executive Board, upon recommendation of the CC. Candidates for Chair, as well as Deputy Chair(s), are proposed by the CC from amongst the members with at least one year of experience in the CC prior to this appointment.

III. Mandate :

12. The period of office of the Chair, the Deputy Chair(s) and the members of the CC is three years, one re-appointment being possible.
13. The following procedure shall be used for appointment of CC members:
 - Formal declaration by the CC Chair to the National Members
 - Proposals of candidates by National Members or group of National Members
 - Recommendation on the presented applications by the CC
 - Appointment by the Executive Board.

IV. Meetings :

14. The CC shall meet as required, physically and/or hybrid, and normally not less than four times a year.
15. The Executive Board may delegate further responsibilities to the CC, indicating the time period of the delegation.
16. The Secretariat General provides the necessary secretarial support, drafts the agenda in cooperation with the Chair and ensures the minutes of the meetings, the distribution of related documentation and the follow-up of agreed actions and decisions.

(This document was updated in December 2025 following the change of name from the European Monitoring Committee (EMC) to the Certification Committee (CC))

